

FAST MOVING TECHNOLOGY

STÄUBLI

We are System Integrator of Staubli in Hong Kong

iTL 領捷科技(香港)有限公司
Insights Technology (Hong Kong) Limited

+852 2907 9266 contact@ithkl.com



Product range

Robotics | Experts in Man and Machine



A unique industrial robot range, power cobots and mobile robot systems for many industries



Automotive



Electronics



Food



Intralogistics



Medical
Pharmaceutical



Metal
Machine tools



Photovoltaics
Semiconductor



And many
more



Assembly



Cleaning
Washing



Handling



Machine loading /
unloading



Measuring
Quality control



Packaging



And many
more

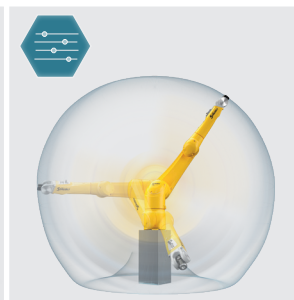
Main benefits

SMART DESIGN



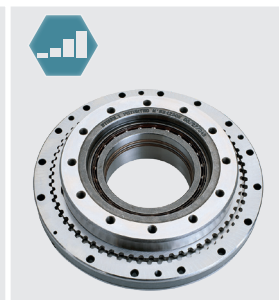
- Encapsulated arms, no external cables
- Compatible with all environments from harsh and dirty to sterile
- IP65/67 for the entire arm with pressurization kit

INTEGRATION FLEXIBILITY



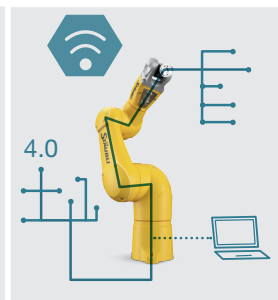
- Large and efficient work envelope
- Multiple mounting possibilities for flexible and scalable integration
- Small footprint for entire range

HIGH PERFORMANCE



- Patented JCS gearbox specially designed for compact robots bringing high dynamics, agility and path precision
- Compatible with NSF H1 food oil with no loss in performance
- 19-bit multiturn absolute encoder technology

CONNECTIVITY TO SMART PRODUCTION



- Integrated electrical and pneumatic user circuit including Cat5e
- Compatibility with all production devices, ERP and standardized protocols including OPC UA
- Web server embedded in CS9 controller

CONSISTENT RELIABILITY FOR SECURED PAYBACK



- Lower total cost of ownership and faster return on investment
- Most energy efficient robot system based on VDMA norm 24608
- Long lifetime and low maintenance; all subcomponents are easily accessible and exchangeable

Standard robots

	TS20	TS2-40	TS2-60	TS2-80	TS2-100	TP80	TX2-40	TX2-60	TX2-60L	TX2-90	TX2-90L	TX2-90XL	RX160	RX160 HD	RX160L	TX200	TX200L	TX250 paint	
Maximum payload	1 kg, 2.2 lb	8.4 kg, 18.5 lb	8.4 kg, 18.5 lb	8.4 kg, 18.5 lb	8.4 kg, 18.5 lb	1 kg, 2.2 lb	2 kg, 4.4 lb - 2.3 kg, 5 lb under conditions	4.5 kg, 9.9 lb - 9 kg, 19.8 lb under conditions	3.7 kg, 8.1 lb - 5 kg, 11 lb under conditions	14 kg, 30.8 lb - 20 kg, 44 lb under conditions	12 kg, 26.4 lb - 15 kg, 33 lb under conditions	7 kg, 15.4 lb - 9 kg, 19.8 lb under conditions	30 kg, 66.1 lb - 34 kg, 74.9 lb under conditions	30 kg, 66.1 lb - 34 kg, 74.9 lb under conditions	20 kg, 44 lb - 28 kg, 61.7 lb under conditions	130 kg, 286.6 lb - 150 kg, 330.6 lb ⁽¹⁾ under conditions	80 kg, 176.3 lb - 100 kg, 220.4 lb ⁽¹⁾ under conditions	10 kg, 22 lb	
Nominal payload	0.5 kg, 1.1 lb	2.4 kg, 5.2 lb	2.4 kg, 5.2 lb	2.4 kg, 5.2 lb	2.4 kg, 5.2 lb	0.5 kg, 1.1 lb	1.7 kg, 3.7 lb	3.5 kg, 7.7 lb	2 kg, 4.4 lb	6 kg, 13.2 lb	5 kg, 11 lb	4 kg, 8.8 lb	20 kg, 44 lb	20 kg, 44 lb	14 kg, 30.8 lb	100 kg, 220.4 lb ⁽¹⁾	60 kg, 132.2 lb ⁽¹⁾	5 kg, 11 lb	
Reach at wrist	220 mm, 8.6 in	460 mm, 18.1 in	620 mm, 24.4 in	800 mm, 31.4 in	1000 mm, 39.3 in	800 mm, 31.4 in	515 mm, 20.2 in	670 mm, 26.3 in	920 mm, 36.2 in	1000 mm, 39.3 in	1200 mm, 47.2 in	1450 mm, 57 in	1710 mm, 67.3 in	1710 mm, 67.3 in	2010 mm, 79.1 in	2194 mm, 86.3 in	2594 mm, 102.1 in	2547 mm, 100.2 in	
Number of axes	4	4	4	4	4	4	6	6	6	6	6	6	6	6	6	6	6	5	
Repeatability X-Y (ISO 9283)	± 0.01 mm	± 0.01 mm	± 0.01 mm	± 0.015 mm	± 0.02 mm	± 0.05 mm	± 0.02 mm	± 0.02 mm	± 0.03 mm	± 0.03 mm	± 0.035 mm	± 0.04 mm	± 0.05 mm	± 0.05 mm	± 0.05 mm	± 0.06 mm	± 0.1 mm	∞	
Stroke	100 mm, 3.9 in	200 mm, 7.8 in or 400 mm, 15.7 in (option)	200 mm, 7.8 in or 400 mm, 15.7 in (option)	200 mm, 7.8 in or 400 mm, 15.7 in (option)	200 mm, 7.8 in or 400 mm, 15.7 in (option)	100 mm, 3.9 in or 200 mm, 7.8 in (option)													
Protection class	IP10	Up to IP65 with ball screw cover and bellows	Up to IP65 with ball screw cover and bellows	Up to IP65 with ball screw cover and bellows	Up to IP65 with ball screw cover and bellows	Up to IP65 with ball screw cover and bellows	IP65 / IP67	IP65 / IP67	IP65 / IP67	IP65 / IP67	IP65 / IP67	IP65 / IP67	IP65 / IP67	IP65 / IP67	IP65 / IP67	IP65 / IP67	IP65 / IP67	IP65	
Weight	15 kg, 33 lb	38 kg, 83.7 lb	39 kg, 85.9 lb	40 kg, 88.1 lb	41 kg, 90.3 lb	68 kg, 149.9 lb	29 kg, 63.9 lb	52 kg, 114.6 lb	53 kg, 116.8 lb	114 kg, 251.3 lb	117 kg, 257.9 lb	119 kg, 262.3 lb	248 kg, 546.7 lb	250 kg, 551.1 lb	250 kg, 551.1 lb	980 kg, 2160.5 lb	1000 kg, 2204.6 lb	250 kg, 551.1 lb	
Multiple mounting attachments																			
Food oil H1 NSF		•	•	•	•	•	•	•	•	•	•	•	•	•	•	•	•	•	•
Robot controller	CS8C M (1 kVA)	CS9 (1.7 kVA)	CS9 (1.7 kVA)	CS9 (1.7 kVA)	CS9 (1.7 kVA)	CS8C (3 kVA)	CS9 (1.5 kVA)	CS9 (1.7 kVA)	CS9 (1.7 kVA)	CS9 (2 kVA)	CS9 (2 kVA)	CS9 (2 kVA)	CS8C (3 kVA)	CS8C (3 kVA)	CS8C (3 kVA)	CS8C HP (4.6 kVA)		CS8C (3.8 kVA)	

Collaborative options

Unique modular SIL3-PLe safety functionalities (option)

POWER cobot TX2touch range (safe touch skin)

Sensitive environments

Harsh: automotive, metal

HE: food, machine tools

Stericlean: medical, pharma

Supercleanroom, Cleanroom: life sciences, semicon, photovoltaics

ESD: automotive, electronics

SAFETY FUNCTIONALITIES, POWER COBOT RANGE AND MOBILE ROBOT SYSTEMS

Unique modular SIL3-PLe safety functionalities

SAFE LIMITED SPEED

The cobot switches to a reduced speed (< 250 mm/s) as soon as the operator enters the environment, regaining full speed once the operator is gone.

SAFE ZONES

Safe Zones ensure safe limited arm performance within predefined areas.

SAFE STOP

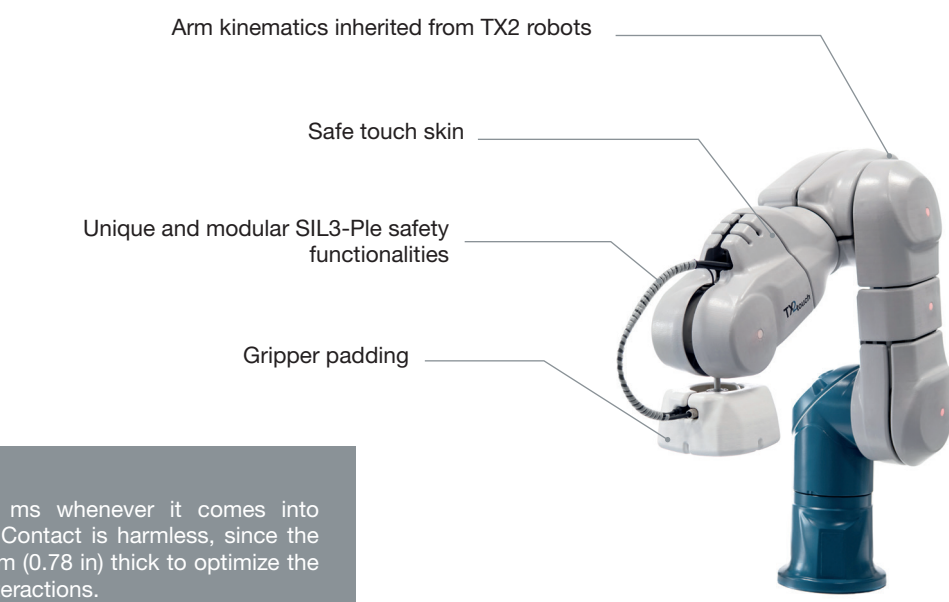
The cobot slows down as the operator approaches, stops during the interaction, and starts up again at the end of the interaction.

SAFE TOOL

Safe Tool is supervising robot's tools or grippers dimension and speed.

TX2touch POWER cobot range

The TX2touch is a unique range of cobots designed for safe Man Robot Collaboration while maintaining high productivity. Based on the proven TX2 industrial robot, it offers safe operation thanks to its advanced skin technology, quick reaction time and embedded modular safety functions. TX2touch is the only cobot with the SIL3-PLe safety level. It is highly productive due to the performance, smart connectivity and reliability inherited from TX2 robots.



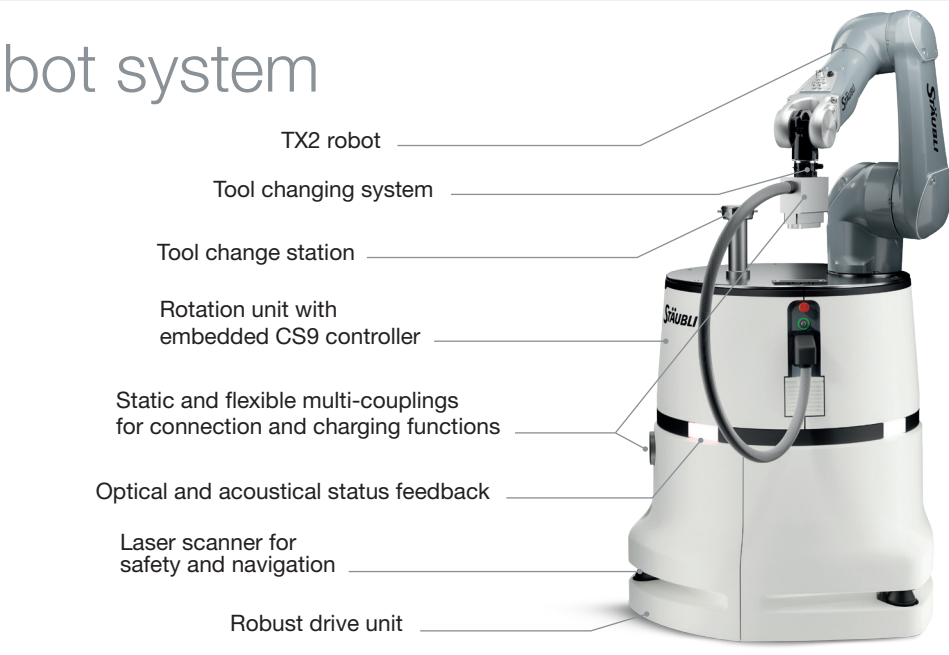
SAFE TOUCH

The cobot reacts in 10 ms whenever it comes into contact with an operator. Contact is harmless, since the cobot's skin is up to 20 mm (0.78 in) thick to optimize the safety of all Man-Robot interactions.

HelMo mobile robot system

The HelMo mobile robot system is an autonomously driving and navigating vehicle that has been developed especially for Human-Robot-Collaboration.

Three integrated laser scanners are permanently monitoring the system's surrounding and ensure precise navigation and safety. In combination with the TX2 robot and the CS9 robot controller including features like safe speed, safe stop and safe zone/safe tool, a safe collaboration is guaranteed.



(1) For ceiling version, consult us. (2) Consult us.

Powerful software solutions for smart production

Stäubli Robotics **CONTROLS**

Perfectly adapted to each user profile

Stäubli Robotics **SUITE**

Efficient and easy programming for faster payback

VAL 3 LANGUAGE

VAL
3

Advanced robotics environment to build high basic to high-end applications

UNIVAL

uni
VAL

uniVAL is a "plug and play" solution to program Stäubli's entire range of robots with your generic motion controllers or PLCs.

uniVAL drive

uniVAL plc

DEVELOPMENT STUDIO



Develop your entire cell offline, visualize it in 3D and calculate your cycle time.

MAINTENANCE STUDIO



Remote-controller access with 3D visualization of the robot cell.

Controller range

CS9



(H x W x D) 270 x 445 x 365 mm - 38 kg
10.6 x 17.5 x 14.4 in - 83.8 lb

- IP20
- 1 GB RAM
- USB ports
- 2 GB CFAST
- Serial link RS232,
- 2 Ethernet ports (Socket, FTP Server/Client)
- EtherCAT Master

- Modbus TCP/IP Server & Client, Sercos III Slave, Ethernet IP Adapter, ProfiNet IO-Device, EtherCAT Slave, PowerLink Controlled Node

Optional for CS9 model:

- PCIe card: **ASI** Master, **CCLink** Client, **Profibus DP** Master & Slave, **Ethernet IP** Scanner & Adapter, **ProfiNet** IO-Controller & Device, **EtherCAT** Master & Slave, **Sercos III** Master & Slave, **PowerLink** Controlled Node
- Remote I/O
- **OPC UA** server

CS8C



(H x W x D) 481 x 445 x 455 mm - 60 kg
19 x 17.5 x 18 in - 132.2 lb

- IP20 (IP54 option)
- 512 Mb RAM
- USB ports
- 2 GB Nand Flash
- Communication RS232/422 serial link,
- 2 Ethernet ports (Socket, FTP Server/Client)

- 1 or 2 boards 16/16 digital I/O, optional
- Modbus TCP/IP Server

Optional for CS8C M, CS8C, CS8C paint and CS8C HP models:

- Modbus TCP/IP Client, CanOpen Master, **Profibus DP** Master & Slave, **DeviceNet** Master & Slave, **Ethernet IP** Scanner / Adapter, **ProfiNet** IO-Controller and IO-Device, **EtherCAT** Slave, **PowerLink** Slave, **OPC UA** server

CS8C paint / CS8C HP



(H x W x D) 1035 x 850 x 780 mm - 140 kg
41 x 33.5 x 31 in - 308.6 lb

(H x W x D) 1035 x 607 x 815 mm - 140 kg
41 x 24 x 32 in - 308.6 lb

- IP54
- 512 Mb RAM

- USB ports
- 2 GB Nand Flash
- Communication RS232/422 serial link,
- 2 Ethernet ports (Socket, FTP Server/Client)
- 1 or 2 boards 16/16 digital I/O, optional
- Modbus TCP/IP Server
- OPC UA server as an option

CS8C M



(H x W x D) 520 x 200 x 300 mm - 17 kg
20.5 x 7.9 x 11.8 in - 34.5 lb

- IP20
- 512 Mb RAM
- USB ports

- 2 GB Flash disk
- Communication RS232/422 serial link,
- 2 Ethernet ports (Socket, FTP Server/Client)

- 1 or 2 boards 16/16 digital I/O, optional
- Modbus TCP/IP Server
- OPC UA server as an option

SP2 manual control unit

This unique terminal combines a lightweight design, ergonomics (for left- or right-handed user) and robustness to deliver advantages in all environments:

- Built-in programming, maintenance and supervision
- Safety functions (3-position dead-man control, emergency stop)
- Ease of use, graphics and intuitive interface
- Integrated Web technology





■ Stäubli Units ○ Representatives/Agents

Global presence of the Stäubli Group

www.staubli.com



We are System Integrator of Staubli in Hong Kong
iTL 領捷科技(香港)有限公司
 Insights Technology (Hong Kong) Limited

☎ **+852 2907 9266** ✉ contact@ithkl.com
 🌐 www.ithkl.com 📍 [Google Map Us](#)

Contact Us

Mik0030EN-ROT-02

