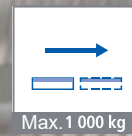
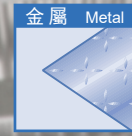


只需一人，便可輕鬆的完成操作。  
One operator can easily manipulate the entire process.



使用真空吊重機VacuMaster-Coil物料處理系統以 90°角旋轉，方便裝卸金屬卷狀材料。

Using vacuum handling systems VacuMaster-Coil to swivel material with 90° angle for load and unload metal coils.

#### Application:

Handling coils and shear strips.

- Suitable for thin and extra-thin aluminum coils, tin coils, stainless steel coils and other workpieces.
- The maximum strip type material thickness is 3.0 mm (aluminum) or 1.5 mm (steel).
- Swivel 90°

#### Product Highlights

- One device handles different size of coil.
- Without mechanical clamping and no damage to the workpiece.
- Alarm and vacuum accumulator ensure safe operation.

#### 應用:

搬運卷材和剪切帶狀材料。

- 適用於薄型和超薄鋁卷、錫卷、不銹鋼卷材等工件。
- 最大帶型材料厚度為3.0mm(鋁)或1.5mm(鋼)。
- 翻轉90°

#### 產品摘要

- 同一設備處理不同大小的卷材。
- 無機械夾持，不損工件。
- 帶有聲響警報裝置和真空蓄能器，確保操作安全。

# 符合人體工程學的物料處理解決方案 Ergonomic Handling Solution

移動高達1噸的工件，安全且高效  
Moves up to 1 tons of workpieces safely and efficiently

## 靈活又兼顧職安健 Flexible, Occupational Safety & Health



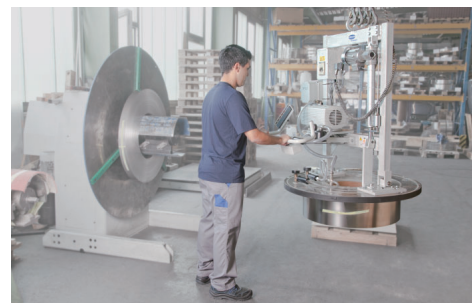
不銹鋼卷材的水平搬運

Horizontal handling for stainless-steel coils



翻轉單元由線性電缸驅動。自動上鎖裝置任意固定工件在任何角度。

Locking mechanism of electrical linear motor enable stop in any angle.



操作員通過長手柄站立操作，與工件保持安全距離。

With long handle bar in standing position ensure safe distance to workpiece.



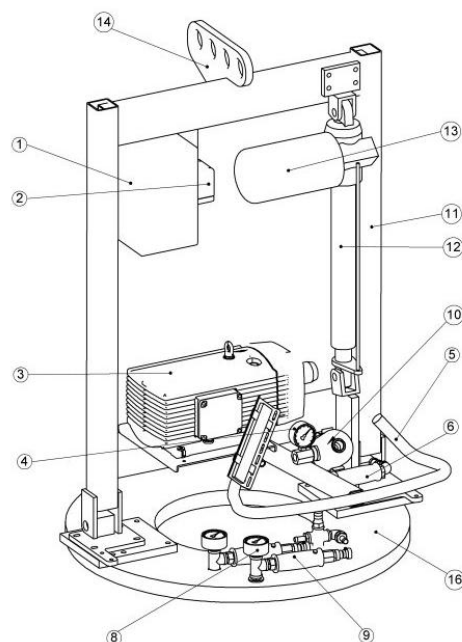
### 設計和功能

- 透明真空吸盤，用於監測提升狀態。
- 三層吸墊可以處理不同尺寸的卷材。

### Design and Features

- Transparent vacuum suction pad for monitoring lifting condition.
- Treble vacuum chambers allow handling with different size of coil.

| No. | Description                | 描述          |
|-----|----------------------------|-------------|
| 1   | Electrical Control Box     | 電控箱         |
| 2   | Alarm System               | 警報系統        |
| 3   | Vacuum Pump                | 真空泵         |
| 4   | Vacuum Accumulator & Gauge | 真空儲能器及壓力表   |
| 5   | Control Handle             | 操作手柄        |
| 6   | Manual Slide Valve         | 手動滑閥        |
| 8   | Vacuum Gauge               | 吸盤真空表       |
| 9   | Individual Slide Valve     | 獨立吸盤手動滑閥    |
| 10  | Vacuum Filter              | 真空過濾器       |
| 11  | Reservoir With Check Valve | 帶單向閥的真空存儲容器 |
| 12  | Electrical Linear Actuator | 線性電動缸       |
| 13  | Electrical Motor           | 電馬達         |
| 14  | Hanging Tightener          | 懸掛吊耳        |
| 16  | Vacuum Pad                 | 真空吸盤        |
| 17  | Check Valve                | 單向閥         |



### 技術數據 Technical Data

| VacuMaster<br>型號<br>Model | 最大負載<br>Max. Load<br>[kg] | 工件規格 Ø [mm]<br>Spec. of Workpiece |         | 卷材最大高度<br>Max. Height of Coil |       | 總高<br>Height<br>[mm] | 操作手柄<br>Length of Handle<br>[mm] | 真空吸盤 Ø [mm]<br>Vacuum Pad |         | 真空腔<br>Vacuum Chamber<br>數量 QTY. | 自重<br>Weight<br>[kg] |
|---------------------------|---------------------------|-----------------------------------|---------|-------------------------------|-------|----------------------|----------------------------------|---------------------------|---------|----------------------------------|----------------------|
|                           |                           | 最小 Min.                           | 最大 Max. | 50 Hz                         | 60 Hz |                      |                                  | 內徑 I.D.                   | 外徑 O.D. |                                  |                      |
| Coil 500 90°              | 500                       | 600                               | 1,200   | 400                           | 330   | 1,300                | 660                              | 410                       | 850     | 3                                | 140                  |
| Coil 750 90°              | 750                       | 600                               | 1,400   | 220                           | 160   | 1,300                | 660                              | 410                       | 1,050   | 3                                | 155                  |
| Coil 1000 90°             | 1,000                     | 750                               | 1,800   | 320                           |       |                      | 660                              | 410                       | 1,200   | 3                                | 190                  |

辦公時間: 星期一至五  
09:00 - 17:30

地址:  
香港新界元朗屏山唐泰路30E

Office Hour: Monday to Friday  
09:00 - 17:30

Address:  
No. 30E, Tong Tai Road, Ping Shan, Yuen Long, N.T., H.K.



**ITL** 領捷科技(香港)有限公司  
Insights Technology (H.K.) Ltd.

+852 2907 9266 [www.ithkl.com](http://www.ithkl.com)

+852 2718 2317 [contact@ithkl.com](mailto:contact@ithkl.com)